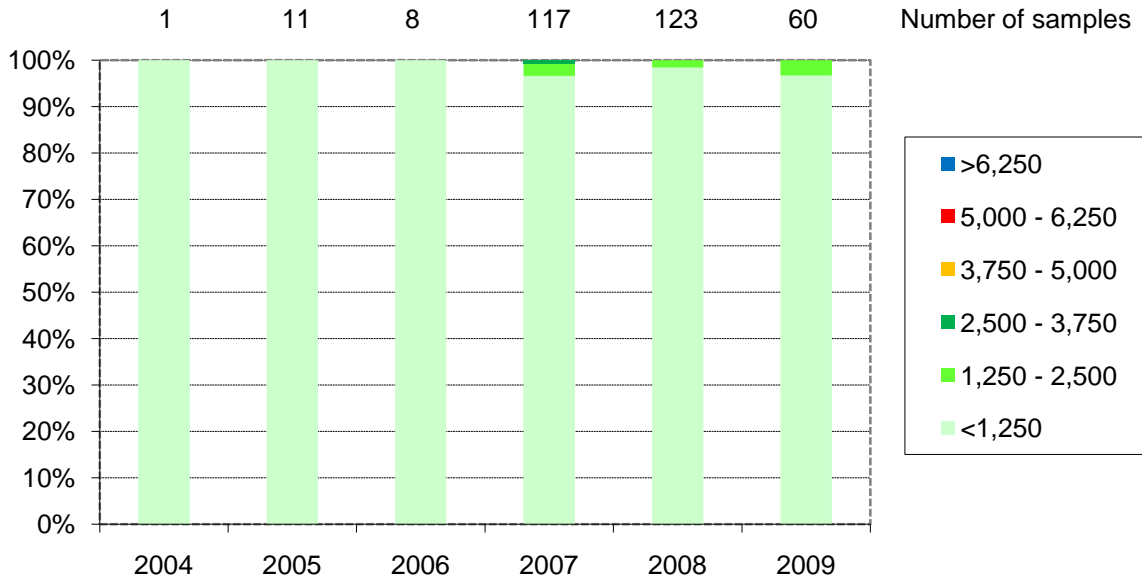
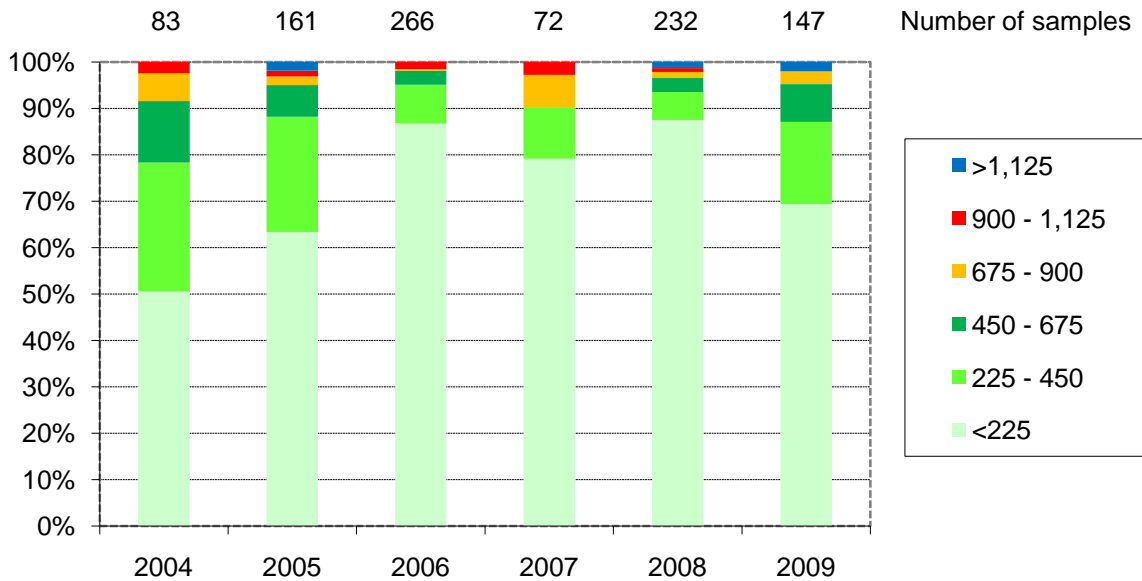


### DON in cattle feed: Percentages of samples by class of contamination (ppm)



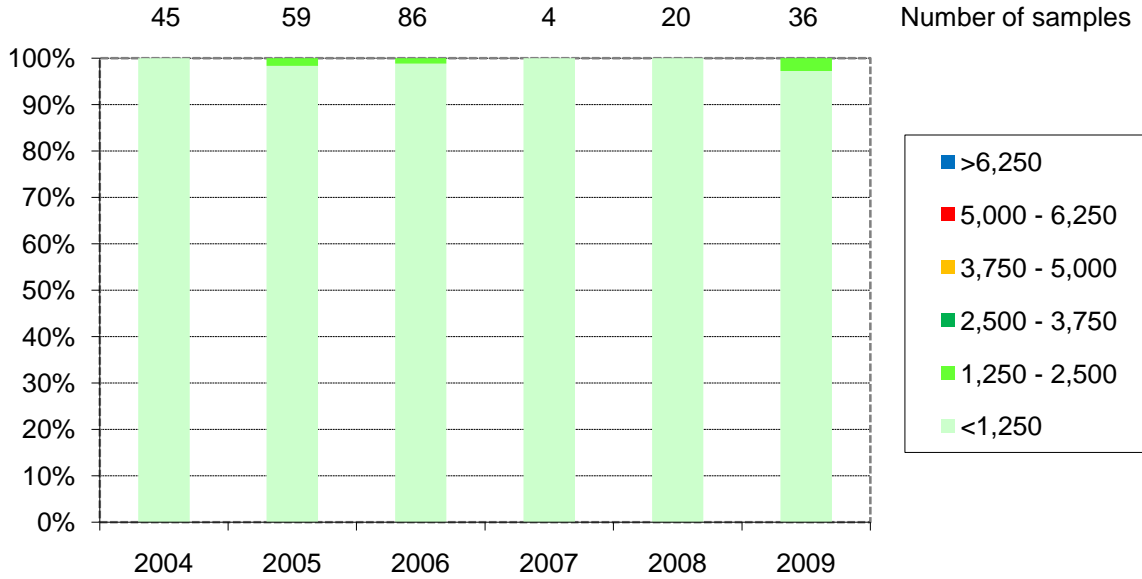
Source FEFAC

### DON in pig feed: Percentages of samples by class of contamination (ppm)



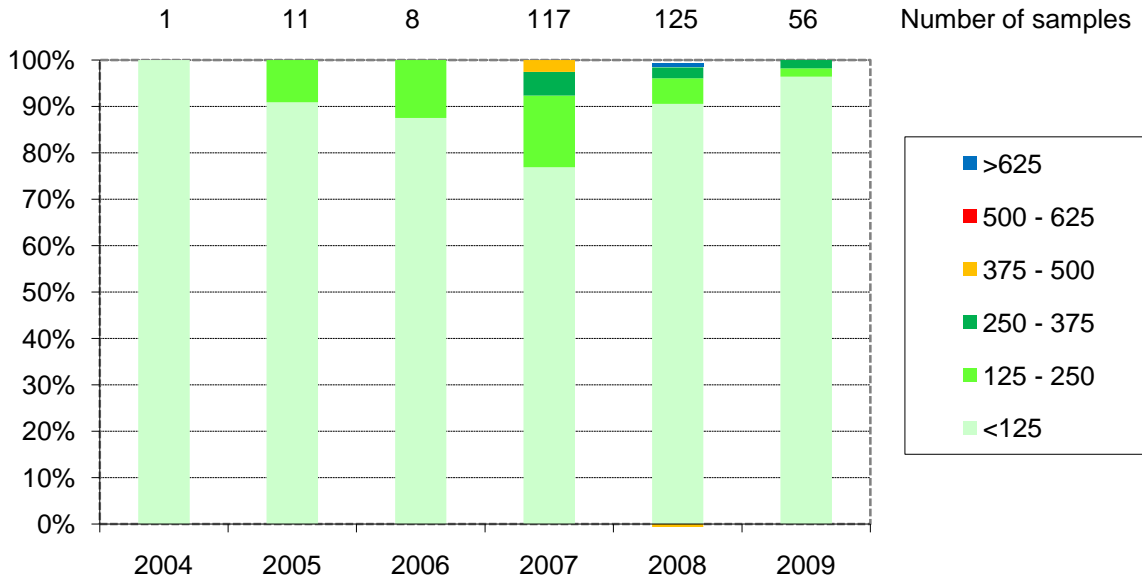
Source FEFAC

### DON in poultry feed: Percentages of samples by class of contamination (ppm)



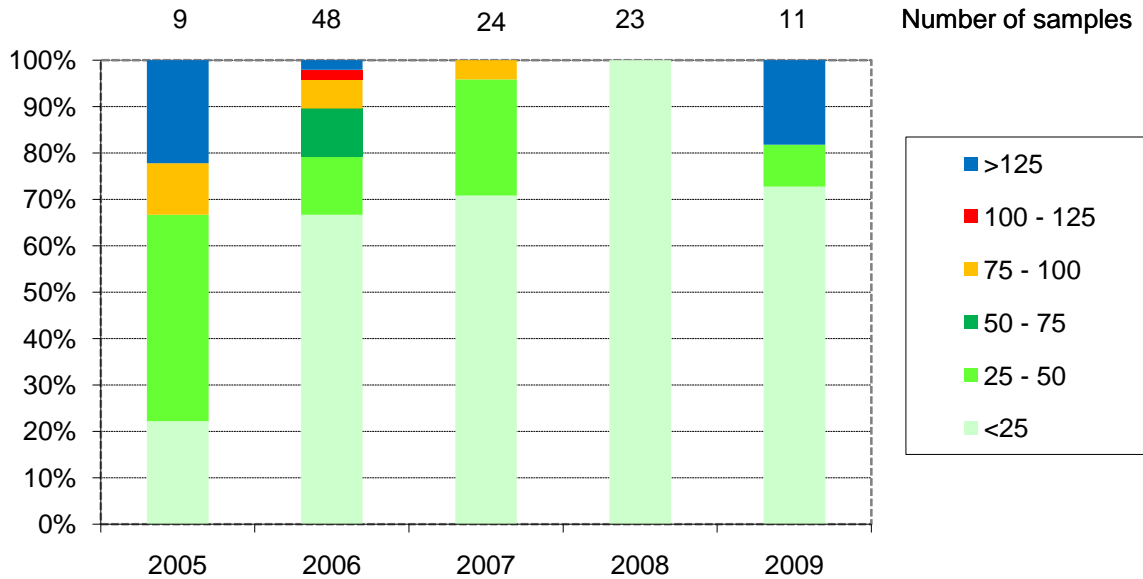
Source FEAC

### ZEN in poultry feed: Percentages of samples by class of contamination (ppm)



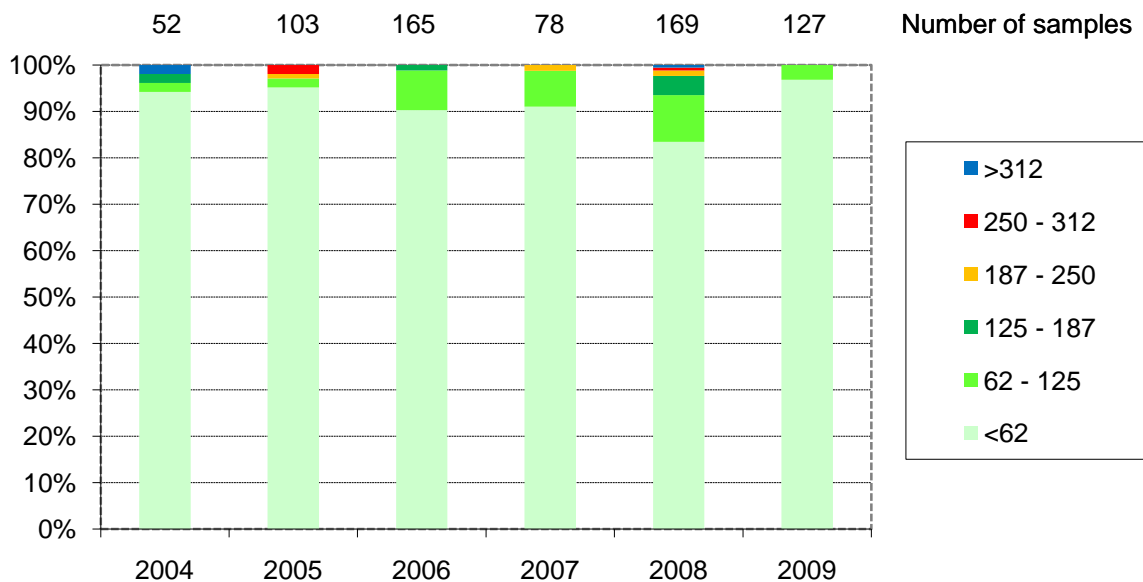
Source FEAC

### ZEN in piglet feed: Percentages of samples by class of contamination (ppm)



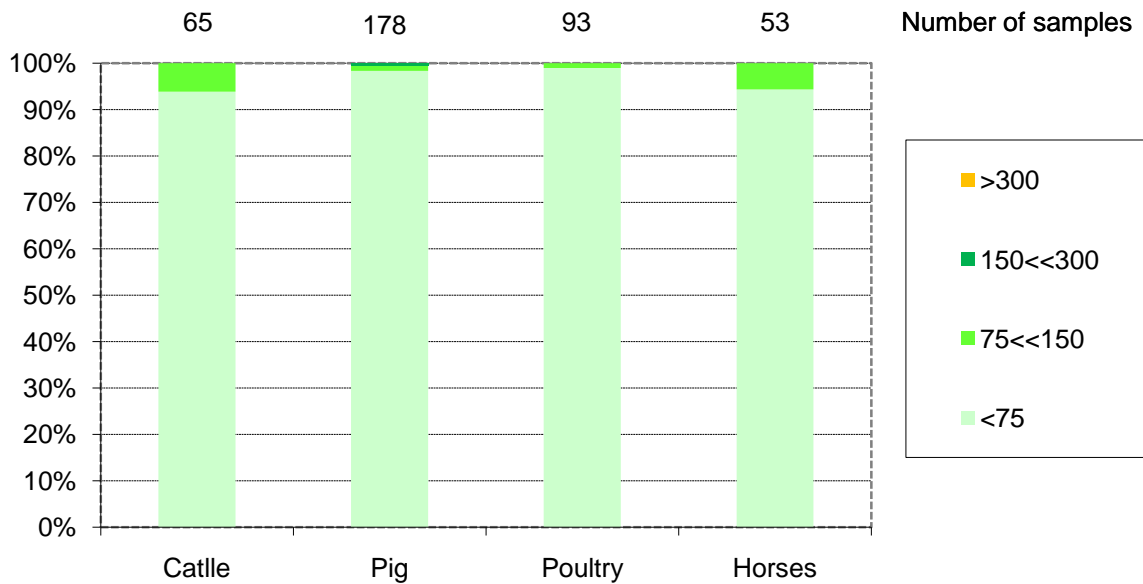
Source FEAC

### ZEN in pig (other than piglet) feed: Percentages of samples by class of contamination (ppm)



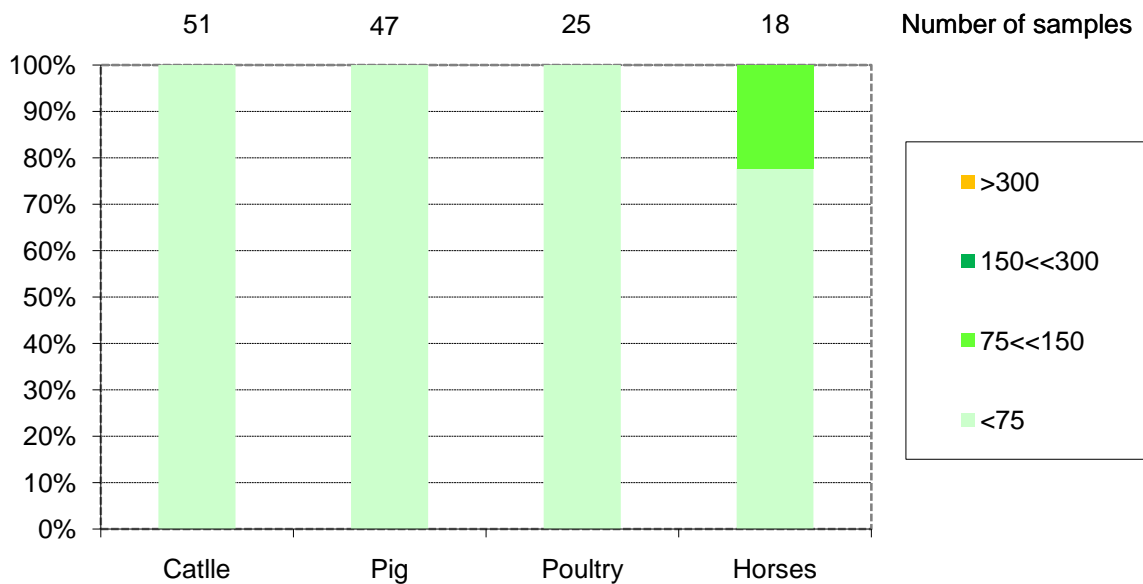
Source FEAC

### T2 in compound feed: Percentages of samples by class of contamination (ppb)



Source FEFAC

### HT2 in compound feed: Percentages of samples by class of contamination (ppb)



Source FEFAC